

<b>Subject:</b>	Film Studies
<b>Specification:</b>	GCSE
<b>Exam Board</b>	WJEC Eduqas

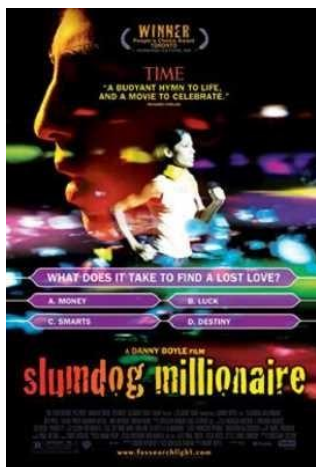
Mr Edwards teaches Film Studies and has been teaching Film and Media Studies at GCSE and A Level for 20 years. Prior to teaching Film he had a career editing Television and Marketing magazines in London for a decade.

For Film Studies at Key Stage 4 GCSE all students have five lessons per fortnight and in year 11, after their two year course, they sit a GCSE examination. We currently use the WJEC Eduqas examination board. Our objective is to enable students of all abilities to develop their appreciation and analysis of a range of film forms, genres, narratives, representations and styles. Students also have the opportunity to put their learning into reality with the creation of their own film coursework – which contributes a third of the assessment criteria.

There are three distinct components for GCSE Film Studies: Component 1 covers the Key Developments in US Film and consists of the close study of a US Film Comparison – namely “Invasion of the Body Snatchers” and “ET”; an overview of key Developments in Film and Film Technology; and an Independent Film “Juno”. These three units are completed with a Written Examination of 1 hour 30 minutes with 70 marks awarded, accounting for 35% of the GCSE.

Component 2 looks at Global Film and the presentation of Narrative, Representation and Film Style. As such, we study Narrative in relation to the global, English language film “Slumdog Millionaire”; we evaluate Representation in the global, non-English language film “Spirted Away”; and we analyse Film Style in the contemporary UK Film “Skyfall”. Again, these three units are completed with a Written Examination of 1 hour 30 minutes with 70 marks awarded and accounting for 35% of the GCSE.

For Film Studies Coursework, accounting for 30% of the GCSE, learners are required to create an individual production from either the Crime, Sci-Fi, War, Horror, Teenage Film or Musical genres. Students may create an opening sequence or an extract from their film showing a scene of suspense or tension lasting 2 minutes 30 seconds. Students can film their extract or produce a screenplay for their extract accompanied by a shooting script detailing camera directions and editing techniques. The coursework is then completed with an Evaluative Analysis consisting of 850 words.



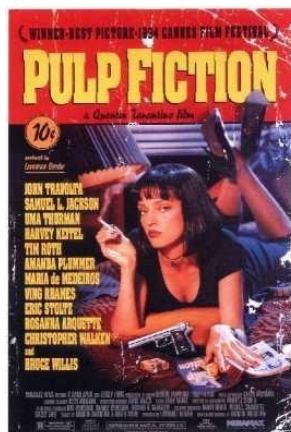
<b>GCSE Resources:</b>	
<b>Useful websites:</b>	<a href="https://resources.wjec.co.uk/Pages/ResourceSingle.aspx?rId=2591">https://resources.wjec.co.uk/Pages/ResourceSingle.aspx?rId=2591</a> <a href="https://resources.wjec.co.uk/Pages/ResourceSingle.aspx?rId=2779">https://resources.wjec.co.uk/Pages/ResourceSingle.aspx?rId=2779</a> <a href="https://resources.wjec.co.uk/Pages/ResourceSingle.aspx?rId=2740">https://resources.wjec.co.uk/Pages/ResourceSingle.aspx?rId=2740</a> <a href="https://resources.wjec.co.uk/Pages/ResourceSingle.aspx?rId=2421">https://resources.wjec.co.uk/Pages/ResourceSingle.aspx?rId=2421</a> <a href="https://resources.wjec.co.uk/Pages/ResourceSingle.aspx?rId=2419">https://resources.wjec.co.uk/Pages/ResourceSingle.aspx?rId=2419</a> <a href="https://resources.wjec.co.uk/Pages/ResourceSingle.aspx?rId=2418">https://resources.wjec.co.uk/Pages/ResourceSingle.aspx?rId=2418</a> <a href="https://resources.wjec.co.uk/Pages/ResourceSingle.aspx?rId=2417">https://resources.wjec.co.uk/Pages/ResourceSingle.aspx?rId=2417</a> <a href="https://resources.wjec.co.uk/Pages/ResourceSingle.aspx?rId=2437">https://resources.wjec.co.uk/Pages/ResourceSingle.aspx?rId=2437</a>

For Film Studies at Key Stage 5 all A Level students have nine lessons per fortnight and in Year 12 and 10 lessons per fortnight in Year 13, after their two year course, they sit an A Level examination. We currently use the WJEC Eduqas examination board. Our objective is to enable students of all abilities to develop their appreciation and analysis of a range of film forms, genres, narratives, representations and styles. Students also have the opportunity to put their learning into reality with the creation of their own film coursework – which contributes a third of the assessment criteria.

There are three distinct components for A Level Film Studies: Component 1 covers the Varieties of Film and Filmmaking and consists of the close comparative study of ‘classic’ Hollywood films – namely “Vertigo” and “Blade Runner”; this is followed by a 2 film study of American productions since 2005, explicitly “La La Land” and “Frances Ha!”; plus a British film since 2005 - that being “Shaun of the Dead”. These three units are completed with a Written Examination of 2 hours 30 minutes with 120 marks awarded, accounting for 35% of the qualification.

Component 2 looks at Global Filmmaking Perspectives and the study of Global Films, Documentaries and Film Movements such as Silent Film and Experimental Film. As such, we study Global Film in a 2 film combination of “Pan’s Labyrinth” and “House of the Flying Daggers”; we evaluate Documentary and Theory in a close analysis of “Amy”; and we explore Film Movements in the Silent cinema of “Strike” and Experimental film “Pulp Fiction”. Again, these four units are completed with a Written Examination of 2 hours 30 minutes with 100 marks awarded and accounting for 35% of the A Level.

For Film Studies Coursework, accounting for 30% of the A Level, learners are required to create an individual production showing either a narrative twist, an opening enigma, establishing of a character or a conflict – all within a genre of their choice but referring to a small selection of a dozen short films shown to the students to inspire and motivate them. Student’s films must be of 4 to 5 minutes in length but, alternatively, students can produce a screenplay for their extract accompanied by a storyboard detailing camera directions and editing techniques. The coursework is then completed with an Evaluative Analysis consisting of 1,800 words.



<b>A Level Resources:</b>	Booklet attached
<b>Useful websites:</b>	<a href="https://resources.wjec.co.uk/Pages/ResourceSingle.aspx?rId=2416">https://resources.wjec.co.uk/Pages/ResourceSingle.aspx?rId=2416</a> <a href="https://resources.wjec.co.uk/Pages/ResourceSingle.aspx?rId=2415">https://resources.wjec.co.uk/Pages/ResourceSingle.aspx?rId=2415</a> <a href="https://resources.wjec.co.uk/Pages/ResourceSingle.aspx?rId=2414">https://resources.wjec.co.uk/Pages/ResourceSingle.aspx?rId=2414</a> <a href="https://resources.wjec.co.uk/Pages/ResourceSingle.aspx?rId=2413">https://resources.wjec.co.uk/Pages/ResourceSingle.aspx?rId=2413</a> <a href="https://resources.wjec.co.uk/Pages/ResourceSingle.aspx?rId=2778">https://resources.wjec.co.uk/Pages/ResourceSingle.aspx?rId=2778</a> <a href="https://resources.wjec.co.uk/Pages/ResourceSingle.aspx?rId=2754">https://resources.wjec.co.uk/Pages/ResourceSingle.aspx?rId=2754</a> <a href="https://resources.wjec.co.uk/Pages/ResourceSingle.aspx?rId=2439">https://resources.wjec.co.uk/Pages/ResourceSingle.aspx?rId=2439</a> <a href="https://resources.wjec.co.uk/Pages/ResourceSingle.aspx?rId=2713">https://resources.wjec.co.uk/Pages/ResourceSingle.aspx?rId=2713</a> <a href="https://resources.wjec.co.uk/Pages/ResourceSingle.aspx?rId=2707">https://resources.wjec.co.uk/Pages/ResourceSingle.aspx?rId=2707</a> <a href="https://resources.wjec.co.uk/Pages/ResourceSingle.aspx?rId=2436">https://resources.wjec.co.uk/Pages/ResourceSingle.aspx?rId=2436</a> <a href="https://resources.wjec.co.uk/Pages/ResourceSingle.aspx?rId=2412">https://resources.wjec.co.uk/Pages/ResourceSingle.aspx?rId=2412</a> <a href="https://resources.wjec.co.uk/Pages/ResourceSingle.aspx?rId=2411">https://resources.wjec.co.uk/Pages/ResourceSingle.aspx?rId=2411</a> <a href="https://resources.wjec.co.uk/Pages/ResourceSingle.aspx?rId=2410">https://resources.wjec.co.uk/Pages/ResourceSingle.aspx?rId=2410</a> <a href="https://resources.wjec.co.uk/Pages/ResourceSingle.aspx?rId=2709">https://resources.wjec.co.uk/Pages/ResourceSingle.aspx?rId=2709</a>